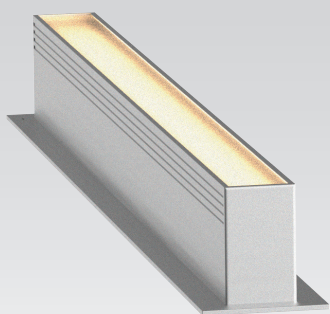


# WP20F IP67 IK10

## PRESSURE PROOF LINEAR LUMINAIRE



### AVAILABLE OPTIONS

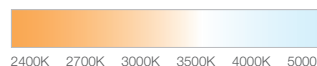
#### COLOUR OPTIONS

SILVER ANODIZED

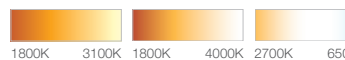


#### CCT OPTIONS

SINGLE CCT



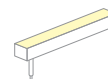
tuneWHITE



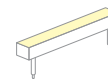
RGBW



#### WIRE END & EXIT CONFIGURATIONS OPTIONS



Single Wire End,  
Rear Exit

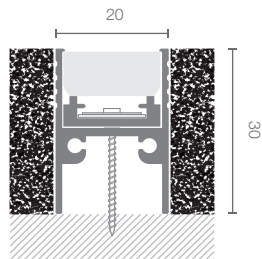


Double Wire End,  
Rear Exit

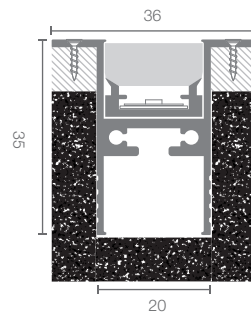
## Pressure Proof Luminaire\_Facade Lighting

Profile Type	20.4mm width aluminium linear profile
Profile Finishing	Silver Anodised
Cover	Diffused
Light Uniformity	Dot-less
Mounting	Recessed Trim, Recessed Trimless
Beam Angle	115°
Power Options	Single CCT - 10W/m, 5W/m tuneWHITE - 10W/m per Channel, 5W/m per Channel RGBW - 10W/m, 5W/m
CRI	ProART (CRI~95)
SDCM	3 step MacAdam ellipse binning
Lifetime	Up to 50,000 hours L80 lamp life at Ta = 25°C
Voltage	24V DC
Maximum Power	10W/m (with exception for FM10 WD)
Length Options	CCT: 508mm, 1008mm, 1508mm, 2008mm TW/RGBW: 512mm, 1012mm, 1512mm, 2012mm
Operating Temperature	Ta (min) = -20°C, Ta (max) = +50°C
Wire Connection	Supplied with insulated IP67 wires and connector at 200mm length
IP Rating	IP67
IK Rating	IK10 (Can withstand 5kg of free fall object dropping from 0.4m height)
Profile LOR	50% (Frosted diffuser)

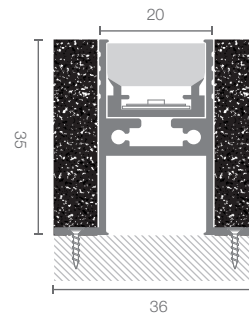
### DIMENSIONS (MM)



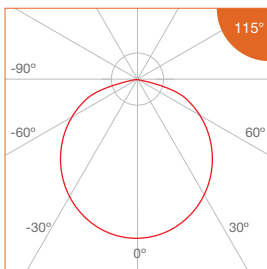
Recessed Trimless



Recessed Trim



### PHOTOMETRICS



SPECIFICATIONS

• Single CCT

CCT	Efficacy (lm/W)	Luminous Flux per meter (lm/m)	
		10W/m	5W/m
2400K	45.6	456	392
2700K			
3000K			
3500K	53.0	530	265
4000K			
5000K			
Correction Factor		1.00	0.50

• tuneWHITE 1800K - 3100K

CCT	Efficacy (lm/W)	Luminous Flux per meter (lm/m)	
		10W/m/Ch	5W/m/Ch
1800K	40.3	403	201
3100K	53.0	530	265
Correction Factor		1.00	0.50

• tuneWHITE 1800K - 4000K

CCT	Efficacy (lm/W)	Luminous Flux per meter (lm/m)	
		10W/m/Ch	5W/m/Ch
1800K	40.3	403	201
4000K	53.0	530	265
Correction Factor		1.00	0.50

• tuneWHITE 2700K - 6500K

CCT	Efficacy (lm/W)	Luminous Flux per meter (lm/m)	
		10W/m/Ch	5W/m/Ch
2700K	53.0	530	265
6500K	55.7	557	278
Correction Factor		1.00	0.50

• RGBW

CCT	Efficacy (lm/W)	Luminous Flux per meter (lm/m)		RGB Wavelength (nm) / White CCT
		10W/m	5W/m	
Red	25.0	42	21	620 - 630
		(@1.68W)	(@0.84W)	
Green	37.8	90	45	515 - 525
		(@2.38W)	(@1.19W)	
Blue	10.1	24	12	460 - 470
		(@2.38W)	(@1.19W)	
White	59.3	211	106	3000K 6500K
		(@3.56W)	(@1.78W)	
Correction Factor		1.00	0.50	

ORDERING MATRIX

Profile	Finishing		Mounting		Cover		Length		LED Module Power & CCT				Wire End & Exit Configuration		Ingress Protection				
	SL	Silver Anodised	T	Trim	D	Diffused	508	508mm	10	10W/m	24	2400K	SR	Single Wire End, Rear Exit	IP67	IP67			
WP20F	SL	Silver Anodised	T	Trim	D	Diffused	1008	1008mm	Single CCT	5	5W/m	27	2700K	DR	Double Wire End, Rear Exit				
										1508	1508mm	30	3000K						
										2008	2008mm	35	3500K						
												40	4000K						
												50	5000K						
									512	512mm	tuneWHITE	10PC	10W/m/Ch					TW1831	tuneWHITE 1800K-3100K
									1012	1012mm		5PC	5W/m/Ch					TW2765	tuneWHITE 2700K-6500K
									1512	1512mm	RGBW	10	10W/m					RGBW30	RGBW(3000K)
									2012	2012mm		5	5W/m					RGBW60	RGBW(6000K)

Example: WP20F-SL-X-1008-5-30-SR-IP67  
 WP20F Profile, Silver Anodised, Trimless, Diffused cover, 1008mm, with FM6 - 5W/m, 3000K, Single Wire End at Rear Exit, IP67, Including 2 x End Cap