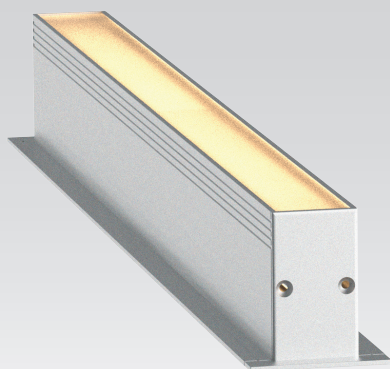


# WP25F IP67 IK10

## PRESSURE PROOF LINEAR LUMINAIRE



### AVAILABLE OPTIONS

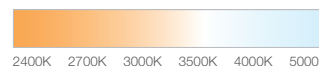
#### COLOUR OPTIONS

SILVER ANODIZED

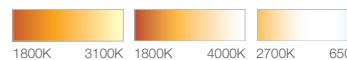


#### CCT OPTIONS

SINGLE CCT



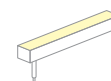
tuneWHITE



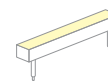
RGBW



#### WIRE END & EXIT CONFIGURATIONS OPTIONS



Single Wire End,  
Rear Exit

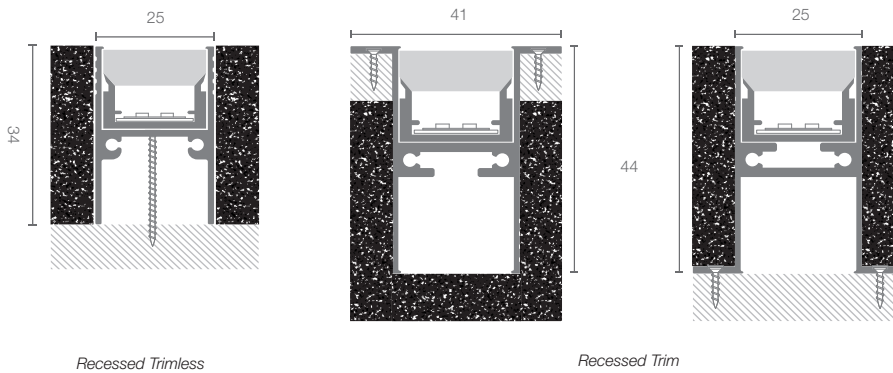


Double Wire End,  
Rear Exit

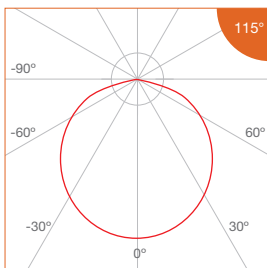
## Pressure Proof Luminaire\_Facade Lighting

Profile Type	24.9mm width aluminium linear profile
Profile Finishing	Silver Anodised
Cover	Diffused
Light Uniformity	Dot-less
Mounting	Recessed Trim, Recessed Trimless
Beam Angle	115°
Power Options	Single CCT - 15W/m, 10W/m, 5W/m tuneWHITE - 15W/m per Channel, 10W/m per Channel, 5W/m per Channel RGBW - 15W/m, 10W/m, 5W/m
CRI	ProART (CRI~95) *Ra>90, R9>50
SDCM	3 step MacAdam ellipse binning
Lifetime	Up to 50,000 hours L80 lamp life at Ta = 25°C
Voltage	24V DC
Length Options	CCT: 508mm, 1008mm, 1508mm, 2008mm TW/RGBW: 512mm, 1012mm, 1512mm, 2012mm
Operating Temperature	Ta (min) = -20°C, Ta (max) = +50°C
Wire Connection	Supplied with insulated IP67 wires and connector at 200mm length
IP Rating	IP67
IK Rating	IK10 (Can withstand 5kg of free fall object dropping from 0.4m height)
Profile LOR	50% (Frosted diffuser)

### DIMENSIONS (MM)



### PHOTOMETRICS



SPECIFICATIONS

• Single CCT

CCT	Efficacy (lm/W)	Luminous Flux per meter (lm/m)		
		15W/m	10W/m	5W/m
2400K	45.6	684	458	226
2700K	53.0	795	533	262
3000K				
3500K				
4000K	55.7	835	559	275
5000K				
Correction Factor		1.00	0.67	0.33

• tuneWHITE 1800K - 3100K

CCT	Efficacy (lm/W)	Luminous Flux per meter (lm/m)		
		15W/m/Ch	10W/m/Ch	5W/m/Ch
1800K	40.3	604	405	199
3100K	53.0	795	533	262
Correction Factor		1.00	0.67	0.33

• tuneWHITE 1800K - 4000K

CCT	Efficacy (lm/W)	Luminous Flux per meter (lm/m)		
		15W/m/Ch	10W/m/Ch	5W/m/Ch
1800K	40.3	604	405	199
4000K	53.0	795	533	262
Correction Factor		1.00	0.67	0.33

• tuneWHITE 2700K - 6500K

CCT	Efficacy (lm/W)	Luminous Flux per meter (lm/m)		
		15W/m/Ch	10W/m/Ch	5W/m/Ch
2700K	53.0	795	533	262
6500K	55.7	835	559	275
Correction Factor		1.00	0.67	0.33

• RGBW

CCT	Efficacy (lm/W)	Luminous Flux per meter (lm/m)			RGB Wavelength (nm) / White CCT
		15W/m/Ch	10W/m/Ch	5W/m/Ch	
Red	25.0	63 (@2.52W)	42 (@1.68W)	21 (@0.84W)	620 - 630
Green	38.1	136 (@3.57W)	91 (@2.38W)	45 (@1.19W)	515 - 525
Blue	10.1	36 (@3.57W)	24 (@2.38W)	12 (@1.19W)	460 - 470
White	59.2	316 (@5.34W)	212 (@3.56W)	104 (@1.78W)	3000K 6500K
Correction Factor		1.00	0.67	0.33	

ORDERING MATRIX

Profile	Finishing		Mounting		Cover		Length		LED Module Power & CCT				Wire End & Exit Configuration		Ingress Protection														
	SL	Silver Anodised	T	Trim	D	Diffused	508	508mm	15	15W/m	24	2400K	SR	Single Wire End, Rear Exit	IP67	IP67													
WP25F	SL	Silver Anodised	T	Trim	D	Diffused	1008	1008mm	Single CCT	10	10W/m	27	2700K	DR	Double Wire End, Rear Exit														
										5	5W/m	30	3000K																
										5000K	35	3500K	40					4000K											
											50	5000K																	
											tuneWHITE	15PC	15W/m/Ch					TW1831	tuneWHITE 1800K-3100K										
												10PC	10W/m/Ch					TW2765	tuneWHITE 2700K-6500K										
									5PC	5W/m/Ch																			
									RGBW	15	15W/m	RGBW30	RGBW(3000K)																
										10	10W/m	RGBW60	RGBW(6000K)																
										5	5W/m																		
									512	512mm	1512	1512mm	2012					2012mm											
1512	1512mm	5PC	5W/m/Ch																										
2012	2012mm	15	15W/m	RGBW30	RGBW(3000K)																								

Example: WP25F-SL-X-D-1008-5-30-SR-IP67  
 WP25F Profile, Silver Anodised, Trimless, Diffused cover, 1008mm, with FM6 - 5W/m, 3000K, Single Wire End at Rear Exit, IP67, Including 2 x End Cap